



IPDC/ISDB-Tmm Solution

ISDB-Tmm for "multimedia broadcast" has been established as a new broadcasting standard. A new service called IPDC (IP data cast) combining IP with broadcast has been brought to reality. VILLAGE island addresses those new services based on in-house platform, the VillageFlow (TS real time processing software) and the VillageVIEW (TS off-line analysis software) in combination with our partner DekTec's ASI and RF interfaces solution.

VILLAGEFLOW

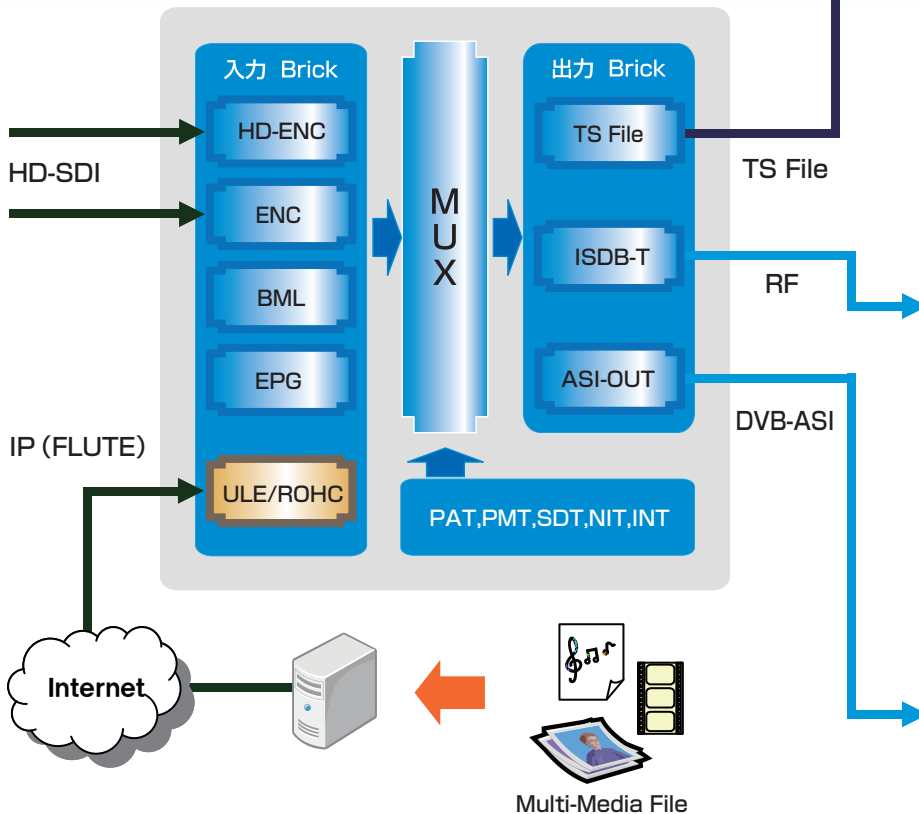
TS Real-time Processing Software

ULE/ROHC processing module

VillageFlow achieves IP header compression, ULE and ROHC data encapsulation compliant with the ARIB standards. From standard Ethernet adapter, the VillageFlow filters IP packets from a specified address/port and then process them according to ULE or ROHC so to generate a multi-output Transport Stream through ASI and RF (ISDB-T) modulated interfaces.

Section transmission

VillageFlow is capable of transmitting INT section with its descriptors for ISDB-Tmm.



Village VIEW

TS protocol analysis software

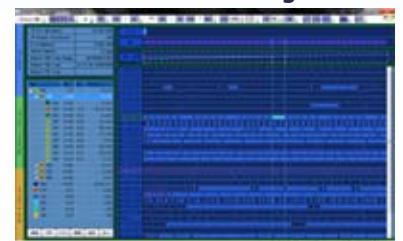
ULE/ROHC analysis/edit

VillageVIEW is capable of several ES analysis of ULE or ROHC structure: data searching, parameter checking or IP packet extraction

Section analysis

Analysis of ISDB-Tmm INT section or descriptors

Village VIEW



DTU - 215

USB-2 ISDB-T VHF/UHF modulator



DTU - 245

USB-2 ASI/SDI Input + Output

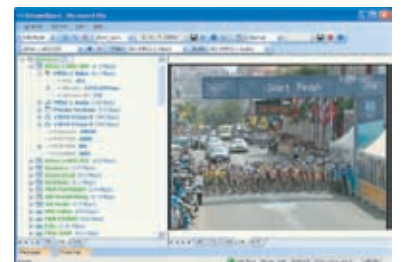


Stream Xpert

TS Analysis and Monitoring Software

Section Analysis

Realtime-analysis of ISDB-Tmm INT section or descriptors



What is ISDB-Tmm?

ISDB-Tmm is the official standard for the next generation of One-seg based services on ISDB-T, the Japanese terrestrial digital broadcasting standard. The ISDB-Tmm standard permits not only real-time data broadcast but also stored contents (ex: multimedia files) delivery.

ISDB-Tmm has adopted the IPDC (IP data casting) for delivering IP packets with file carousel. It makes use of the FLUTE file delivery protocol, and encapsulates IP datagrams using the ULE protocol and the ROHC IP header compression technology. The data are made to be multiplexed within standard MPEG-2 TS and broadcasted through the air.

New standards for transmitting IP data through broadcast network is in continuous discussion and subject to changes depending on the law regarding broadcasting. VILLAGE island watches closely the evolution of the ISDB-Tmm discussion.



VILLAGE island Co.,Ltd.

1-3-1 Azabujuban, Minato-ku, Tokyo 106-0045 JAPAN
Tel : (+81) 3-6426-5420/ Fax : (+81) 3-6426-5421
Email: sales@village-island.com



VILLAGE island Asia Pte Ltd

190 Middle Road, #19-05 Fortune Center, Singapore 188979
Tel: (+65) 6826-1050/ Fax: (+65) 6826-1051
E-mail: sales-asia@village-island.com