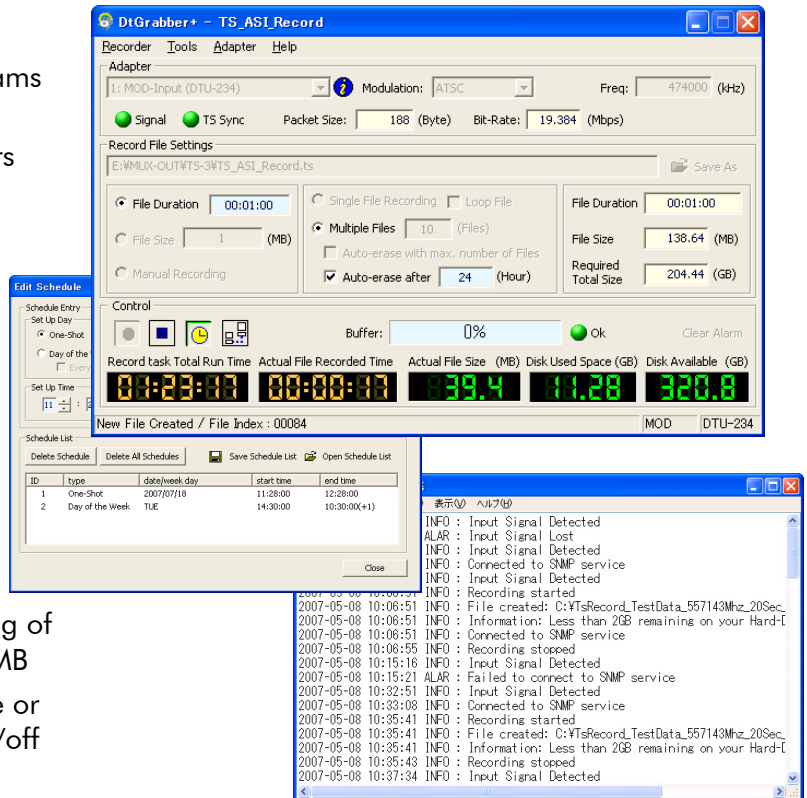


Transport-Stream / SDI Advanced Recorder

- Looped and Scheduled Recording
- PID Filtering
- Remote Control through SNMP

FEATURES

- Recording of MPEG-2 Transport-Streams or SDI signals
- Supports all DekTec interface adapters with one or more input ports
- Scheduled recording
- Multi-file functions:
 - Erase files older than X hours
 - Maximum number of files
 - Time stamp/index in filename
- Remote monitoring and control through SNMP
- Select PIDs to record, with range support, positive/negative filtering
- Record to a single file, to multiple files or "looped": continuous recording of the last X seconds/minutes/hours or MB
- SDI recording: 8 or 10 bits, full frame or video only, Huffman compression on/off
- Limit record-file size on basis of:
 - Maximum duration (e.g. record 60 sec)
 - Maximum size (e.g. record 10 GB)
 - Record until stopped
- Disk-space monitoring
- Application message log and SNMP traps
- Merge tool for combining several files



APPLICATIONS

- General-purpose capturing tool
- Advanced recorder solutions
- Archiving of broadcast signals

MINIMUM PC REQUIREMENTS

Platform	Windows-2000 / XP / 2003
Processor	PIII 1 GHz* / 256 MB P4 2.4GHz / 512 MB recommended
Disk (recording)	7200rpm for rates up to 120 Mbit/s 15000rpm or striped array of disks for rates above 120 Mbit/s or for SDI

* Or equivalent AMD processor

SUPPORTED INPUT ADAPTERS

Bus	Types
PCI	DTA-115, DTA-120, DTA-122, DTA-124, DTA-140, DTA-145, DTA-160
PCI Express	DTA-2145
USB-2	DTU-225, DTU-245, DTU-234, DTU-235

DtGrabber+ is a joint development of DekTec Digital Video BV and Village Island Co, Ltd (www.village-island.com)